



Warden® 100SC Insecticide

Systemic, Residual and Targeted Insecticide

Product Overview

- WARDEN® 100SC Insecticide is a residual insecticide, in a Suspension Concentrate Formulation, containing 100 g/L of the active ingredient fipronil
- It is registered for the control of Argentine Stem Weevil, Mole Cricket and Funnel Ant in all recreational turf situations including golf courses, bowling greens, parks, playing fields and commercial turf farms
- WARDEN® 100SC Insecticide is also registered for the control of subterranean termites around domestic and commercial structures
- WARDEN® 100SC Insecticide is a schedule 5 – Caution insecticide.

Mode of Action

GROUP 2B INSECTICIDE

Fipronil, the active ingredient in WARDEN® 100SC Insecticide, kills insect pests by disrupting the insect nervous system via the GABA channel, acting with contact and ingestion action. It blocks the GABA-gated chloride channels of neurons in the central nervous system preventing chloride uptake. Due to the excess chloride, neural overstimulation occurs preventing feeding with eventual death of the target insect resulting.

Fipronil movement within plants is generally upward via xylem activity, with very limited movement within the phloem. As a result of this mobility, fipronil and its metabolites are found mainly in the older leaves and stems (organs which are located at the top of young seedlings) with very low levels found in the floral parts and growing points of older plants. Systemic activity appears to be more pronounced in monocot (grasses) than dicot plants.

Use Rates

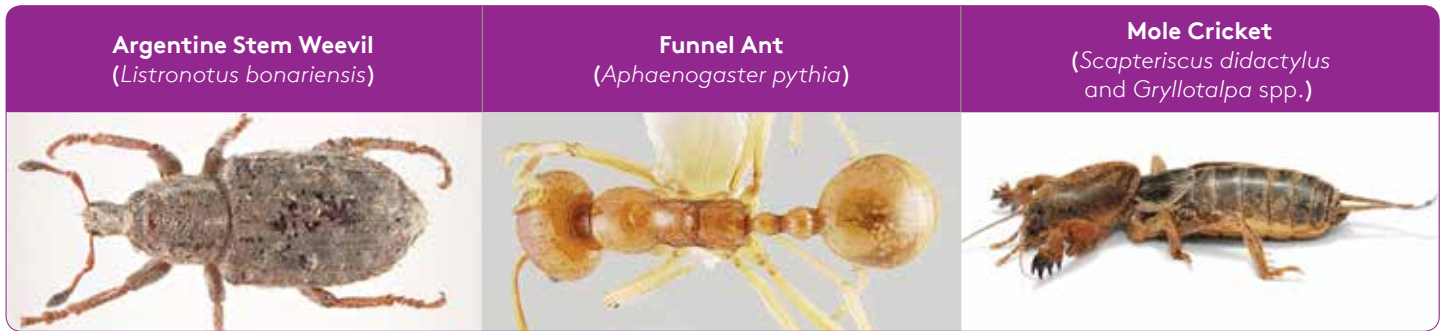
Apply spray mix evenly to the surface at the first signs of pest activity. Ensure incorporation with at least 6 mm of rainfall or overhead irrigation immediately after application. Do not apply to excessively wet soils, immediately after or during heavy rain.

INSECT	APPLICATION RATE	WATER RATE
Argentine Stem Weevil (<i>Listronotus bonariensis</i>)	750 mL/ha	>1,000 L/ha. Irrigate with 6 to 10 mm after application
Funnel Ant (<i>Aphaenogaster pythia</i>)	600 mL/ha	>1,000 L/ha. Irrigate with 6 to 10 mm after application
Mole Cricket (<i>Scapteriscus didactylus</i> and <i>Gryllotalpa</i> spp.)	300 mL/ha	>1,000 L/ha. Irrigate with 6 to 10 mm quickly after application only if required
Subterranean Termites including (but not limited to) <i>Coptotermes acinaciformis</i> , <i>Mastotermes darwiniensis</i> , <i>Schedorhinotermes</i> spp.	600 mL in 100 L of water	See label for additional treatment information specific to the situation.

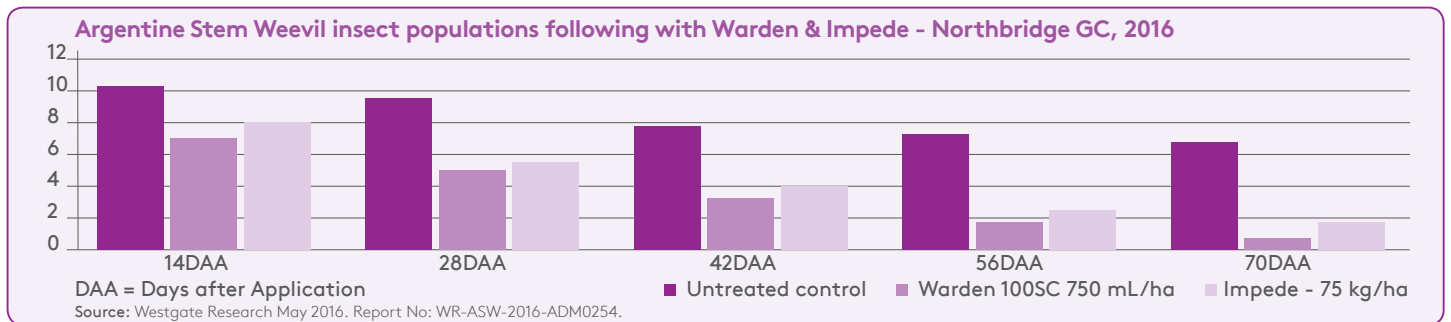
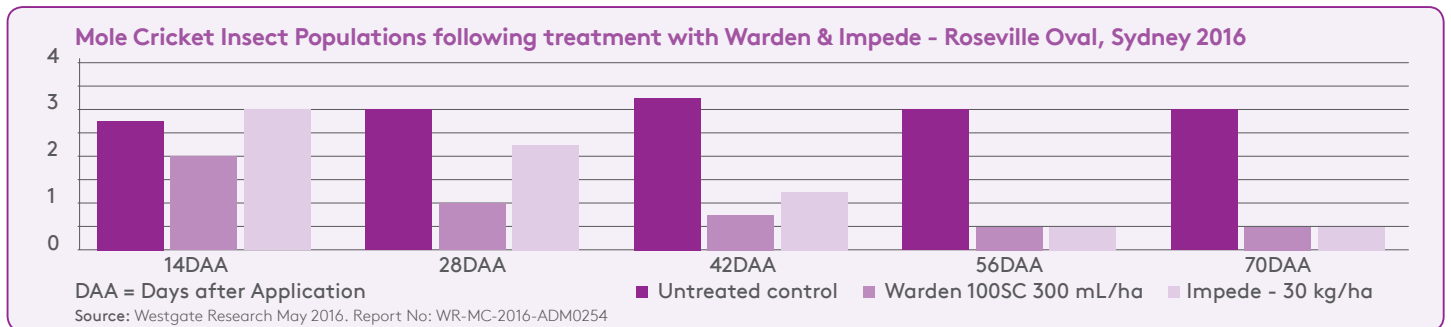


Warden® 100SC Insecticide

Insects controlled by Warden® 100SC Insecticide



Field Trial Research Results with Warden® 100SC Insecticide



Features	Benefits
Systemic activity (Upwards)	Controls insects as they feed on the plant
Residual activity	Prolonged insect control, particularly with ants and mole crickets
Quality suspension concentrate formulation	Low odour, Premium quality formulation
Liquid formulation	Easier to handle, use and apply uniformly when compared to granular fipronil products
Lower poison scheduling (Reduced PPE requirements)	WARDEN® 100SC is a schedule 5 Product - Caution. Some other competitive liquid fipronils are schedule 6 - Poison
Targeted control of tough turf insect pests	Very effective on ants and mole crickets. Strong base insecticide for argentine stem weevil programs

Visit adama.com for further details.
 © Registered trademarks of Adama Agricultural Solutions

Please note: This information is not intended to replace the product labels. Always read the complete product label appearing on the container before opening or using products. Product labels also available on adama.com

ADAMA

Simply. Grow. Together.

For more information on WARDEN® 100SC scan here or visit adama.com



For Technical Assistance:
1800 327 669

For more information visit
adama.com

For Customer Enquiries:
1800 4 ADAMA