

Rudduck Alpha Rapid Rodenticide



The Facts



What is it?

35g/Kg Alphachloralose



Alphachloralose is a new (to Australia) acute and very fast-acting poison for the control of mice.

Used in tamper resistant bait boxes it provides effective control of mice in a wide variety of locations.

How does it work?



It works as a form of anaesthetic providing rapid and distress free control of mouse populations.

Initially it causes drowsiness and within 10 to 15 minutes results in loss of consciousness with death following quickly due to hypothermia.

How much does it take to kill a mouse?



The dose is body weight dependent, but a normal, wild, adult mouse would normally need only less than a quarter of a gram – a lick or tooth scratch!

Will mice eat it readily?



Although Alphachloralose is inherently not very palatable - Alpha Rapid has been formulated to be highly palatable.

Mice will feed randomly from 20-30 sites per night on 200 occasions so palatability is critical.

This combination of fats was shown to increase bait take four-fold.

Is it temperature dependent?



This active is an anaesthetic and such materials are known to be more effective in the body at lower temperatures.

Activity is therefore best when mice feed in cool conditions...but high mortality rates have been achieved at much higher temperatures.

10-16deg C is the optimum to achieve around 95% control, but good control has been achieved at significantly higher temperatures.

How much bait will be taken?



When inexperienced users first examine other blocks for signs of 'take' they often look for large consumption.

Usually only a small scratch from a mouse's incisors on the Alpha block's surface is sufficient and just 'sampling' of the bait is very often enough.

Is there a secondary poisoning issue?



Alphachloralose has been extensively researched, new studies have shown it *does not* bio-accumulate in the body and *does not* cause secondary poisoning in wildlife.

Used appropriately it will *reduce* the amount of SGARs in the environment.

Is there any resistance?



There is no known resistance to this bait.

Where do mice die?



Due to the rapid onset of drowsiness, once mice have eaten the bait they will become sedated and very often die in the bait box.

When this happens, dead mice can be recovered easily and won't die in inaccessible areas, creating unwanted odours.

Should Alpha be used with other actives?



No. Not at the same time. Alphachloralose is ideal as a treatment to control mice infestations quickly over a few days . But use it as an acute poison!

Thereafter, if there is a re-infestation, a follow-up treatment using other types of SGAR rodenticides is recommended.

There are very few non anti-coagulants in existence so the opportunity to employ IPM techniques will protect the SGARS from over-use is important.

Conclusion



This new Alphachloralose product is a proven safe and effective additional tool to use with the anti-coagulant rodenticides available in Australia today.

It offers a radical improvement in the speed of service and environmental impact when a mouse control operation is required.

This new product is the result of fifteen years research and development.

It is a very major product in the UK & Europe.

The Label



ACTIVE CONSTITUENT: 35 g/kg ALPHACHLORALOSE
 RESTRICTED CHEMICAL PRODUCT – ONLY TO BE SUPPLIED TO OR USED BY AN AUTHORISED PERSON.
 READY TO USE BLOCK BAIT. FOR THE CONTROL OF HOUSE MICE (*Mus domesticus*).

DIRECTIONS FOR USE:

RESTRAINTS:

DO NOT place baits where night time temperature is expected to exceed 21°C.
 DO NOT place baits at a distance greater than 2 m from buildings.
 DO NOT exceed 3 m between bait stations for mice.
 DO NOT place baits in open.

NOT TO BE USED FOR ANY PURPOSE, OR IN ANY MANNER, CONTRARY TO THIS LABEL
 UNLESS AUTHORISED UNDER APPROPRIATE LEGISLATION.

SITUATION	PEST	RATE	CRITICAL COMMENTS
In and around Industrial, Commercial, Agricultural and Domestic situations, including sub-floors, roof voids and wall cavities.	House mice (<i>Mus domesticus</i>)	1 to 2 bait blocks per tamper resistant bait box.	Place baits only when night-time temperatures are expected to be below 21°C. Place edible items which cannot be moved in rodent-proof containers. Sweep up all edible waste. Protect baits from water where possible. BAITING STRATEGY- Eliminate as far as practicable, all alternative food sources. Bait infested area. Place loaded bait boxes under cover. Inspect baits daily. Replace eaten baits. If eaten quickly increase number of baits. Continue observation and replenishment until no more baits are taken. Baiting for at least 2 weeks is necessary to reduce mouse number.

AUTHORISED PERSON: This product must only be supplied to and used by Authorised Persons. Each State and Territory has specific criteria that must be addressed before a person is considered to be an authorised person. Persons wanting to be considered to be an authorised person for the use of this product must contact the appropriate State or Territory authority to address the criteria and ensure that the State or Territory Control of Use legislation is adhered to. This product is not registered for the control of protected native rodents or other native animals.

PRECAUTION: DO NOT allow bait to contaminate foodstuffs or food intended for human or animal consumption. DO NOT apply bait to crops.

240 g NET
 CONTAINS 48 X 5 g BAIT BLOCKS



CLA312

POISON
 KEEP OUT OF REACH OF CHILDREN
 READ SAFETY DIRECTIONS BEFORE OPENING OR USING

Place baits in locations or bait stations which are inaccessible to other animals and birds. This product is hazardous to pigs, cats, dogs, native wildlife and poultry.

PROTECTION OF WILDLIFE, FISH, CRUSTACEANS AND ENVIRONMENT: DO NOT contaminate streams, rivers, or waterways with the chemical or used containers. Place baits in locations inaccessible to animals other than target animals. DO NOT place baits near drains, waterways and sewage.

STORAGE AND DISPOSAL: Store in the closed, original container in a cool, well-ventilated area. DO NOT store for prolonged periods in direct sunlight. Break, crush, puncture and bury empty containers and dispose of unused baits and animal carcasses in a local authority landfill. If not available bury the containers, unused baits and animal carcasses below 500 mm in a disposal pit specifically marked and set up for this purpose clear of waterways, desirable vegetation and tree roots. Empty containers and product should not be burnt. DO NOT use containers which have held bait for any other purpose.

SAFETY DIRECTIONS: Very dangerous. Poisonous if swallowed. When preparing product for use wear elbow-length PVC gloves. If on skin and after each baiting, wash thoroughly with soap and water. After each day's use, wash gloves and contaminated clothing.

FIRST AID: If poisoning occurs, contact a doctor or Poisons Information Centre. Phone Australia 13 11 26; New Zealand 0800 764 766. Avoid giving alcohol.

SDS: Additional information is listed in the Safety Data Sheet available from the supplier.

MANUFACTURER'S WARRANTY AND EXCLUSION OF LIABILITY: This product as supplied is of a high grade and believed to be suitable for any purpose for which it is expressly recommended and must be used in accordance with the Directions for Use given on the label. No responsibility is accepted in respect of the product save those non-excludable conditions implied by any Federal and State legislation or law of a Territory.

APVMA Approval No. 62064/122147

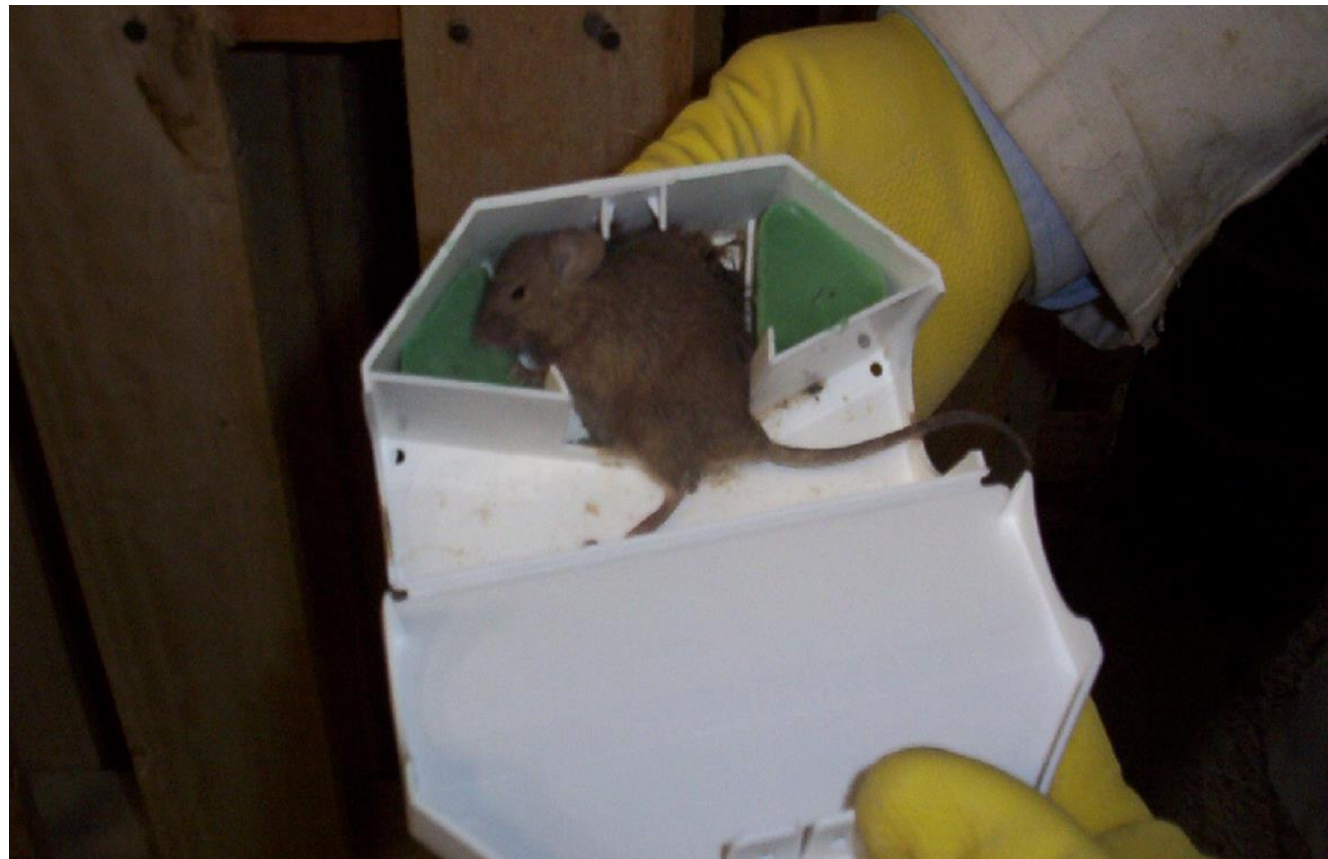
Batch No.

D.O.M.

C Rudduck Pty Ltd
 Unit 2, 247 Ingles Street, Port Melbourne Vic. 3207
 Telephone 03 9676 4444



Thank you





6/105 Derby Street, Silverwater NSW 2128
sales@agserve.com.au

1800 55 44 45

Pest & Insect Control Products, Supplies and Equipment - Agserve Pty Ltd